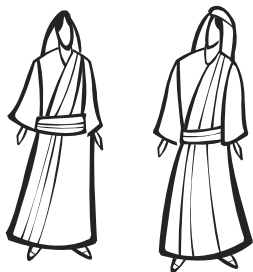


Follow the Letters

Naomi and Ruth are going on a trip. Can you figure out where they are going? Follow the directions on the map and pick up letters along your way. When you write them in the spaces below, you'll see the women's destination!



Map

- 2 RIGHT
- 3 DOWN
- 3 RIGHT
- 1 DOWN
- 2 LEFT
- 2 DOWN
- 5 RIGHT
- 4 DOWN
- 1 RIGHT

START T B X R M
 H O C B K I
 M J O A S H I
 I S E D A T E R
 Z R L M H L Z Q
 Y U I B L G I P R
 F E O N W V H F
 S T C O R W
 G E I D P
 N J S K U
 Q A O E M

Follow the Letters Solution

Naomi and Ruth are going on a trip. Can you figure out where they are going? Follow the directions on the map and pick up letters along your way. When you write them in the spaces below, you'll see the women's destination!

Map

2 RIGHT
3 DOWN
3 RIGHT
1 DOWN
2 LEFT
2 DOWN
5 RIGHT
4 DOWN
1 RIGHT

START T B X R M
H O C B K I
M J O A S H I
I S E D A T E R
Z R L M H L Z Q
Y U I B L G I P R
F E O N W V H F
S T C O R W
G E I D P
N J S K U
Q A O E M

B E T H L E H E M